

Technical Specifications

- Capacity: From 2000 kg to 100 tons
- Travel: 500 to 15000 mm
- Closed Height: 450 - 1200 mm
- Length: 4000 - 9000 mm
- Width: 2000 - 5000 mm
- CE-Marked and comply with European Norms and Standards
- 2 Safety lock for maintenance
- Safety trip bar in aluminum
- Available in Ral Colors
- Large in-house lift table stock for immediate delivery



NOTE: ALL DETAILS CAN BE CUSTOMIZED FOR YOUR NEEDS

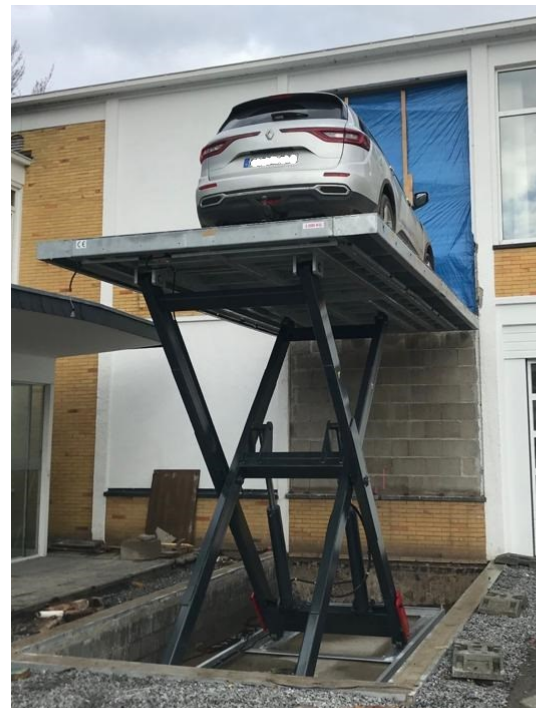
OndLift is biggest manufacturer company in Lifting Tables sector in Turkey and exporting 32 countries.

OndLift' s Lift Tables series, designed for high lifting capacities and performance of applications.

OndLift' s Lift Tables series can be the manufacturing with different kind of options, such as mobile base, loading flaps, guard rails, rollers. (for detailed information, please check Lift Table Accessories Datasheet).

OndLift' s Lift Table series, have a vital role to create ergonomic and safe working conditions. Can be the best selection of challenging situations, high lifting capacities, intense pace of work.

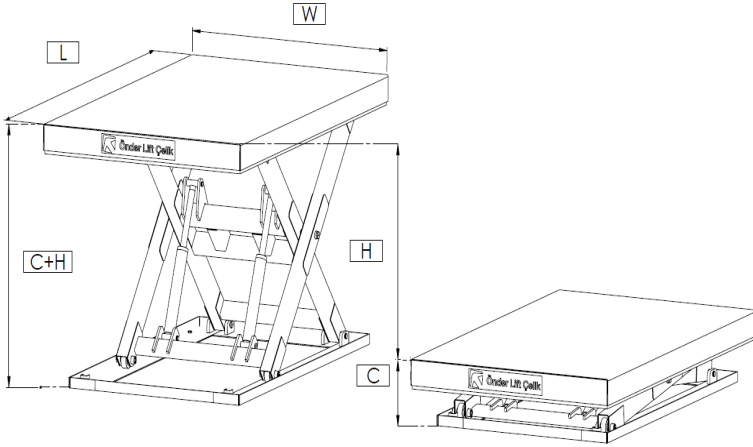
For more information www.ondlift.com



Art No	Model	Capacity kg	Platform Dimension LxW mm x mm	Lift Stroke H mm	Closed Height C mm	Lift Time sec	Motor kW	Weight kg
80.25.001	CSPD.1/25-35*	2500	5000 x 2500	3500	450	65	5,5	3000
80.25.002	CSPD.1/25-40*	2500	6000 x 2500	4000	650	75	5,5	3400
80.25.003	CSPD.1/25-50*	2500	7500 x 2500	5000	750	90	5,5	4000
80.25.100	CSPD.2/25-65*	2500	5000 x 2500	6500	800	110	7,5	5000
80.25.101	CSPD.2/25-75*	2500	6000 x 2500	7500	1000	130	7,5	5400
80.25.102	CSPD.2/25-100*	2500	7500 x 2500	10000	1200	160	11	6000

* External power pack

Technical Drawing



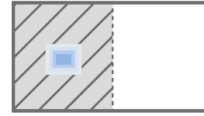
- L:** Platform Length
- W:** Platform Width
- C:** Closed Height
- H:** Stroke
- C + H:** Maximum Height

Load Factors Accordance with EN1570-1

Maximum load refers to the load being uniformly distributed over the entire platform area in accordance with EN 1570 the basic requirements are;



100 % of maximum load uniformly distributed over the entire platform.

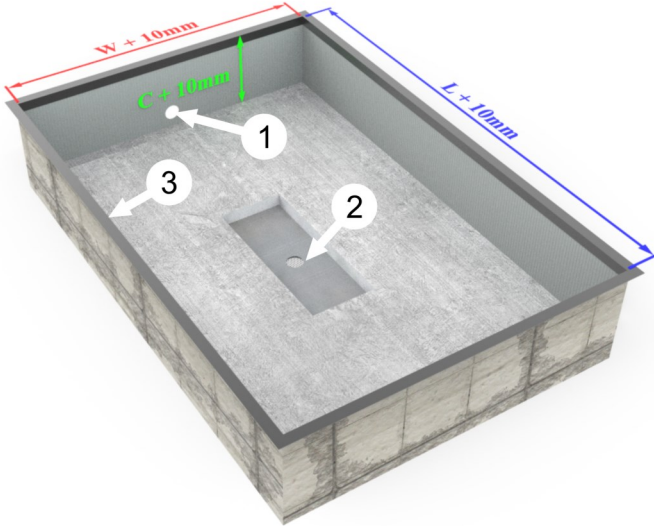


50 % of load weight uniformly distributed over half of the platform area lengthwise.



33 % of load weight uniformly distributed over half of the platform area sideways.

Standard Pit Details



When a lifting table is installed in a pit, the pit should be constructed according to the illustration on the left.

- W = Width of the platform
- L = Length of the platform
- H = Lowest height of the lift table

The pit's ballast material must at least meet the concrete classification C12/15.

The hydraulic power pack for lifting tables in an outdoor environment should, where possible, be externally located in a covered or indoor environment.

- 1- Pipe for incoming cables, 100 mm in diameter. The fixed side of the lift table.
- 2- Drainage holes where required. This is centre of the pit should be 80 mm.
- 3- L-shaped profile 100x100 mm to reinforce the pit edges.

ONDLIFT Mak. San. Tic. Ltd. Şti

Factory: Organize Sanayi Bolgesi 2004 Cad. No: 4
Turgutlu/Manisa/TURKEY

Showroom: İmes San. Sit. C.302 Sk. No:13
Y.Dudullu/Umraniye/Istanbul/TURKEY

Tel: 0090 236 332 5050

ondlift@ondlift.com

Product specifications are subject to change without any notice or obligation. The photographs and/or drawing in this documents are for illustrative purpose only. All productions of OndLift, manufacturing for CE standards.

Turkey
Discover the potential

Onder Lift Celik



43rd Years Anniversary

Your warehouse partner

Onder Group Company